

Big Blockade Briefing

Aldermaston Atomic Weapons Establishment

Monday 15th February 2010, 7am

Contents

Introduction	Getting to AWE Aldermaston
Contacts	Parking at AWE
Why Blockade the Atomic Weapons Establishment at Aldermaston?	What to bring to the blockade
The Blockade	What NOT to bring to the blockade
Nonviolence Guidelines	After the Blockade
Affinity Groups	Donations Request
Nonviolence Training	Legal Briefing
Tactics	Legal Observers Briefing
Support Work	Legal Registration Form
Legal Observers and Legal Support Team	Bust Card
Practicalities	Maps of AWE

Introduction

When the British Parliament decided to replace the UK's nuclear weapons system Trident in March 2007, it agreed to new submarines and missiles, but not to refurbishing or replacing the warheads. Despite the fact that such a decision is not due until the next Parliament, continued building work at AWE and other evidence (including documents obtained by CND) suggests plans to test, design and build a new generation of nuclear warheads are already going ahead.

We must hold the Government to its continued assurances that the decision to replace Trident is not irreversible. There have been a number of

positive developments relating to this recently, including the delay to the 'Initial Gate' decision on replacing the Trident nuclear weapons submarines, until after the nuclear Non-Proliferation Treaty Review Conference in May 2010. Previously, the Government planned to move on to the next stage of the replacement process during the Parliamentary recess in September. In addition to this, there has been increased support for disarmament, with a recent poll showing the majority of the British public want the country to rid itself of nuclear weapons.

There has been a diverse range of anti-nuclear campaigning activities over the decades – from lobbying and petitioning through to street activity, peace camps, and non-violent direct action, from Faslane in Scotland down to Devonport in south west England. All have their welcome place in the movement, and AWE Aldermaston is no exception, as many groups such as Aldermaston Women's Peace Camp, CND and Trident Ploughshares have all played a part in highlighting the role of the nuclear bomb factory.

Recent actions at Aldermaston have included:

- Easter Monday 2008 - the 50th anniversary of the arrival of the historic first march to Aldermaston, CND organised a demonstration which up to 5,000 people joined at the Atomic Weapons Establishment, Aldermaston, calling for No Trident Replacement.
- Monday 27th October 2008 - around 300 people gathered to blockade the base and there were 33 arrests, organised by Trident Ploughshares.

Contacts

For general information on the blockade ring 0845-4588-361 or email blockawe@yahoo.co.uk

For more specific information on joining groups coming from your geographical area or special interest then email or phone the following contacts:-

Wales and International - Angie on 01547-520929 or reforest@gn.apc.org

Why Blockade the Atomic Weapons Establishment at Aldermaston?

Blockading the factory at AWE is an effective way of disrupting the ongoing work carried out there of building facilities for, and doing research into, the next generation of Trident warheads, Britain's nuclear weapon of mass destruction. Such a blockade allows everyone to get involved at a level with which they are most comfortable. Involvement can range from their simple but visible presence at the gates, to trying to communicate with workers, to directly impeding access to the illegal and immoral work at AWE Aldermaston by blockading the gates for as long as possible and risking arrest.

- Monday 15th June 2009 - 4 gates were blocked as different Trident
- Ploughshares groups converged on the base from different directions in a surprise action that took over 4 hours for the lock-ons in cars and a caravan to be dismantled.

Now we need action focused on the nuclear bomb factory at Aldermaston to increase, building on the work of the Aldermaston Women's Peace Camp and the non-violent direct actions by TP and Block the Builders. It is crucial we get a massive turn-out to blockade the base on 15th February 2010. We need to send a clear message that we will not tolerate nuclear proliferation and demand that the UK disarm its nuclear weapons now and stop further work on the replacement of Trident.

We're calling on all of you to non-violently blockade the nuclear bomb factory. Join us! Be part of it!

For further information about Aldermaston visit the Aldermaston Women's Peace Camp website

Scotland - Jane on 01436-671845 or tp2000@gn.apc.org

England - Mel on 0845-3370282 or mellcndeast@cnduk.org

Religious Faiths - Chris at chris@cnduk.org

Women - Andree at andreeduguy@yahoo.com

Students - Chris at chris@cnduk.org

Cyclists and Environmentalists - Tim at info@bikesnotbombs.org.uk

Participation in the blockade is not restricted to Trident Ploughshares members or to CND members.

Anyone willing to abide by the guidelines laid out in this briefing will be very welcome. We're asking everyone who comes to the Big Blockade to make it a colourful and life-affirming occasion with costumes, musical instruments, flags, banners and leaflets. Celebrate life and our resistance to nuclear weapons!

The Blockade

The action planned for Monday 15th February 2010 is a mass blockade of all of the gates of the Aldermaston Atomic Weapons Establishment. We intend to be in place at the gates from 7a.m. Participants will also be distributing leaflets and displaying posters explaining why we are there and offering to engage in dialogue. Don't forget it will be dark at that time of the year so make sure your blockades are visible by having lights or florescent jackets and signs.

There are seven gates at AWE Aldermaston (reading anticlockwise, see map below). You can find photos of the gates at <http://www.aldermaston.net/galleries/140>

The **MAIN GATE** for visitors and management consists of 2 separate gates for entry and for exit, both of which need blocking;

FALCON GATE, rarely used except when other gates are blocked, so it is an important gate to block;

TADLEY GATE and **HOME OFFICE GATE**, these are the main entrances for most staff, leading to the inner West Gate, and for contractors working on new developments;

CONSTRUCTION GATE leads to the high security area;

NORTH GATE, used by Park and Ride staff buses;

BOILER HOUSE GATE which is also used by staff and some contractors. There is also an unused Reading Gate which can be opened as necessary.

Groups are being encouraged to take responsibility for different gates as follows:-

North Gate – Environmentalists/Climate Activists/Cyclists. For more information about this block please contact www.bikesnotbombs.org.uk

Boilerhouse Gate - Scotland. For more information about this block please contact tp2000@gn.apc.org

Nonviolence Guidelines

We are committed to acting always in a way that causes no harm to ourselves or others. We ask that everyone taking part in this action respect and follow these guidelines:

Main Gate Out (the right hand side facing the gate) - Southern England, Medical Professionals, Choirs and Internationals. For more information about this block please contact mellcndeast@cnduk.org except internationals who should contact reforest@gn.apc.org

Main Gate In (the left hand side facing the gate) – Northern England, Midlands, Choirs and Internationals.

For more information about this block please contact mellcndeast@cnduk.org except internationals who should contact reforest@gn.apc.org

Falcon Gate – Students

Tadley Gate – Faith groups

For more information about this block please contact chris@cnduk.org

Home Office Gate – Women

For more information about this block please contact andreeduguy@yahoo.com
There will be a training for women to prepare to blockade the Womens Gate. For more information see: <http://www.aldermaston.net/events/297>

Construction Gate – Wales

For more information about this block please contact reforest@gn.apc.org

We would like as many groups as possible to organise their own training, tactics and support well before February and then to travel directly to AWE Aldermaston to join the blockade on the Monday morning. We can help put people in touch with groups if you contact us and we can also help provide groups with trainers and advice. We will be doing overall legal support and will organise the pick-ups from police stations as people are released. Those who cannot find a group to join can come along on their own on the day but should read the pack carefully and note the strict nonviolence guidelines.

Contact the Action Line on 0845 4588 361 for more information.

- Our attitude will be one of sincerity and respect towards the people we encounter
- We will not engage in physical violence or verbal abuse toward any individual

- We will carry no weapons
- We will not bring or use alcohol or drugs other than for medical purposes
- We will clear the blockade to allow emergency vehicles in or out of the base

and then resume the blockade afterwards

For instance, we would not want people to come masked up or to have personally insulting placards against the police.

Affinity Groups

We're asking people to organise into self-sufficient affinity groups. An affinity group is a group of people of about 6 - 18 people who support each other during an action. It makes it easier to look after everyone's welfare and safety and to keep track of arrests for legal support. Through affinity groups we can make

decisions quickly with spokespeople from each group meeting together.

You can join an affinity group or organise your own at the regional meetings being held before the action. If you are not already in an affinity group we can help you find one to join.

Non-violence Training

If you haven't had training for Non-Violent Direct Action before you should attend a training workshop before the Blockade. There will be Trident Ploughshares non-violence trainings being organised regionally so once you have been put into contact with a local group you should be able to access a planning and training workshop.

There will be a training for women to prepare to blockade the Womens Gate. For more information see

<http://www.aldermaston.net/events/297>

Sat 23rd Jan, London - Friends House, 175 Euston Road, NW1 2BJ, Room 2, 11am to 4pm. For training in nonviolent direct action - to include blockading techniques, legal briefing and support roles.

Please book in advance. Contact Mell – mellcndeast@cnduk.org or 0845 337 0282
Directions: Opposite Euston mainline train station - nearest tube: Euston / Euston Square
<http://www.friendshouse.co.uk/getting-here>

Sun 31st Jan, Gloucester - Friends Meeting House, Southgate Street, Gloucester GL1 1TS, 1.30-4pm.

Contact Alison - alison.crane@ntlworld.com

Sat 6th Feb, London - Friends House, 175 Euston Road, NW1 2BJ, 9.45am - 12.45pm. Contact Chris - chrisandgwyn@phonecoop.coop
Directions: Opposite Euston mainline train station - nearest tube: Euston / Euston Square
<http://www.friendshouse.co.uk/getting-here>

Sat 6 Feb, Edinburgh, 2 - 5pm, St John's Church Hall, Prince's St.

Contact Jane: tp2000@gn.apc.org

Sun 7 Feb, Glasgow, 2-5pm, Anderston Kelvingrove Church, 759 Argyle Street (at Elderslie Street)

Contact Jane: tp2000@gn.apc.org

Alison Crane 0845 4588362 can help find trainers and provide training materials for your local group. Let us know about your training so we can help publicise it

Tactics

We want to stop all traffic and pedestrians from getting into the base for as long as possible by non-violently using our bodies and safe equipment like lock-ons and our imaginations to block the entrances to the site. No one should do anything that they are unhappy with. Usually the police only arrest people who refuse to move from the roadway so arrest of supporters who do not wish to be arrested and who move when asked is unlikely unless the police place a

section 14 order on the demonstration (see legal briefing).

In the past people have blockaded by standing, sitting or lying across the road/gate entrances with their arms linked. People often go limp when arrested making it harder for the police to move them. Sometimes people have chained themselves together or to objects. To make it more difficult for the police to cut chains, people

join their hands through metal or plastic tubes and lock their hands together using karabiners (climbing clips) attached to chains or rope around their wrists. The lock-on tubes have to be long enough to prevent the police sliding them along people's arms to reveal the chain or rope. If you use lock-ons make sure you know what they have been made of and can answer accurately the police cutting-team's questions on whether they are safe to remove ie. make sure they do not have asbestos or sharp glass at weird angles or anything else that would hurt a careful person doing their best to release you without hurting you or themselves.

Care has to be taken not to let the police suspect you plan to use lock-on materials as in the past they have arrested people for having tubes or chains. Tubes can be disguised as part

of a fancy-dress costume, as part of street theatre props, as dummy missiles, in old rucksacks – use your imagination! You can look at the photos on the www.faslane365.org website for lots of pictures of different kinds of blockades. Even just sitting can be very effective if there are large numbers of people and if they continue to keep coming back if they are just moved aside by the police.

Tactical details can be worked out at the local meetings beforehand. It is best to have a meeting specifically for planning and making materials for blockading and for painting your own banners. Remember that you can make blockades very accessible, warm and comfortable by designing lock-ons around umbrellas, chairs, sofas, beds or pop-up tents – be creative!

Support Work

There are important support roles that require some people in each affinity group to avoid arrest. At least one person in your group should act as 'Legal Observer' to record the names of those arrested and pass them on to the Legal Support Team. Training for legal observers can be included in your local trainings. People not risking arrest can also take care of practical support for people who have been arrested such as looking after their belongings and keeping those vital minibus keys safe.

It would also be very useful for supporters to support other gates if and when their gate has had their blockade 'cleared' by the police. Some of the gates are out of the way and not used much (the North Gate is a good example) but nevertheless it is important for the effectiveness of the blockade as a whole to have all gates blocked and it would be good if news/music/good wishes and thanks can be taken around to them too.

Legal Observers and Legal Support Team

Each affinity group should include at least one Legal Observer. Their role is to be present throughout the blockade, and:

- Ensure that everyone in their group has filled out a legal registration form and given it to the Gate Support person to take to the Legal Support Team.
- Record all arrests where possible, including the name of the person arrested; the number of the arresting officer; time of arrest; reason for arrest and any other relevant details, including if there is any use of excessive force or other unlawful behaviour by the police.
- Provide this information to the Legal Support Team. Legal Observers should not liaise with the police, but should talk to the Gate Support Team if there are problems.

All legal observers need to have pen and paper and a mobile phone in order to contact the Legal Support Team. Please send the name and mobile number of your legal observer to Sian (one of the Legal Support Team) on **07887802879** before 7.00 am on Monday 15 February.

Please note, legal observing carries serious responsibilities, including that you may have to act as a witness in a court case or complaint against the police. There is a full legal observers briefing on page 13 of this pack.

There will be an On-Site Legal Support Team, who will be available to help observers and with whom observers will meet at Mackie's Café (across the road from Home Office Gate) after the blockade is over. The On-Site Legal Support Team will contact police stations, arrange lawyers if necessary and send information on arrests, places of detention and information

about releases to the Off-Site Legal Support Team (location to be announced later). This team will maintain records of arrests etc and arrange pick-ups from police stations. If you want to know what has happened to your friend, please ring them on the Action Line.

At each gate there will be volunteers in yellow fluorescent vests as part of the 'Gate Support Team'. They will be there to help with transport, police liaison and any other difficulties that may occur. One of them will take your legal

registration forms and deliver them to the Off-Site Legal Support Team.

There is a lot of other support work that needs to be done in the week before, during and after the action. If you wish to help in any way then please contact the Action Line. For the On-Site Legal Support number and the Off-site Legal Support Team number please look at the bust card nearer the time. It will also be posted on the website.

Action Line: 0845 4588 361

Practicalities

Accommodation: All the groups coming will be sorting out their own en-route accommodation so that police cannot easily prevent people from getting to the blockade. However, if you have decided to stay near

Reading we might be able to help provide you with some information on accommodation. Many groups will be travelling overnight to arrive in time for the early 7am start of the blockade.

We will however be providing accommodation for people on the Monday night after the blockade so we can de-brief together, and provide food and entertainment for the blockaders as they are released from the police station. The accommodation and meeting place will be announced later, and will be open from 4pm on Monday 15th February 2010 until Tuesday morning at 8am. There will be several other places to sleep that will stay open until 9.30 am on the Tuesday morning. Please let us know if you want accommodation and for what nights by ringing 0845 4588 361 or emailing us.

Legal Support and Media Liaison: will also be run from off site, and it would be good if you could arrange to do your own local media work as we will be concentrating on the national and international press.

There are no special arrangements for children at this event and for animal welfare reasons please leave dogs at home.

Food: Everyone should come as self-sufficient with food and drink as possible although we have arranged for there to be 4 tea-stalls serving hot drinks, soups and tea and cakes at 4 of the gates and drinks and snacks will be taken to all of the gates at some time or other during the blockade. There will be hot vegetarian and vegan food available on the Monday evening at our meeting venue from 5 p.m. onwards and breakfast will also be available for the Tuesday morning (please offer a donation if you can).

Registration: We'd like everyone to fill out a legal registration form (whether or not you are arrestable or a supporter) for the action so we can provide effective legal support and get people out of police stations as soon as possible. Please fill in a registration form and give it to the gate support person who will arrange for all the registration forms from that gate to be taken to the Legal Support Team. You will also be able to register on your bus or at the start of the day and these forms will also be given to the gate support person.

Briefings: Workshops to discuss nonviolence, blockading tactics and legal briefings will be arranged by groups around the country in different places so do get in contact with your local regional organiser or phone the action line for contacts. Legal briefings, bust cards, nonviolence guidelines and legal registration forms will be available from gate support people at each gate

Getting to AWE Aldermaston

Local transport can be booked with groups from the following regions:

Cumbria And Lancashire CND -

r.allwright@lancaster.ac.uk 01524 33991

Mid Somerset –

msomcnd@aol.com 01749 830741

Southern Region CND -

02380 328335

London Region CND –

david.lrcnd@cnduk.org 020 7607 2302

Yorkshire CND -

hannah@yorkshirecnd.org.uk 01274 730 795

West midlands CND -

wmcndall@gn.apc.org 0121 643 4617

East Anglia- Norwich CND -

mellcndeast@cnduk.org or Lesley-07711298214

Greater Manchester and District CND-

gmdcnd@gn.apc.org 0161 2738283

Scotland –

Minibuses will be going from Waterloo Place in Edinburgh, and from George Square in front of Glasgow City Chambers and other locations in Scotland at 8:30am on Sunday 14 February and returning by 6:30pm Tuesday 16 Feb. Cost is £15 (£5 Deposit) Sponsorship available for those unable to pay the full cost. Accommodation will be in church halls. Bring sleeping mats and bags. A donation toward the cost of food and accommodation is requested. To book a place call Edinburgh Peace and Justice Resource Center: 0131 229 0993 or logon to the website: <http://www.peaceandjustice.org.uk>

Each local group should work out their own route to AWE Aldermaston depending on which gate they are blockading. It might be a good idea for some of you in your group to visit AWE Aldermaston well before the day and do a recon. Or have a woman in your group visit the Aldermaston Womens Peace Camp during one of their monthly week-end camps there (see <http://www.aldermaston.net/index.php>) - they can give you lots of advice and help and take you around. Remember that roads might be quite slow moving if the blockades have already started so choose a route that takes you most directly to your gate without passing too many of the other gates. OS maps 174 and 175 together provide the routes in and around AWE Aldermaston, although the establishment is not actually marked on the maps!

In an effort to provide safe passage for coaches and reduce the likelihood of lengthy coach delays created by police searches and other harassment we would advise people not to arrive with concrete filled wheelie bins or similar equipment and expect to get on a coach! We will try to help with transport needs if notified early – by the end of January ideally but late entries will be offered assistance wherever possible.

Please be aware that blockades may cause traffic hold-ups or make certain roads inaccessible.

Anyone with specific or individual access requirements please let us know so we can make arrangements in plenty of time.

The Site: AWE occupies over 600 acres of land between Aldermaston & Tadley. It has a perimeter of 4½ miles, with much of the perimeter being public highway which includes various roundabouts, cycle paths and road junctions, with multiple entrances into the site. Peaceful protest is encouraged anywhere around the perimeter of AWE.

By car: From the M4, exit at Junction 11 and follow the A4 towards Newbury. After approx 6 miles take the first exit left off roundabout onto the A340.

From Newbury head east along the A4 towards Reading for approx 10 miles then turn right at roundabout onto the A340.

From M3/Basingstoke take the A339 Ringway North and then the A340 to Tadley.

By public bus: For all bus journeys to AWE for the blockade please contact Traveline on 0871 200 2233 or check their on-line journey planner at <http://www.travelinesoutheast.org.uk> before making travel plans. Below is an outline of current availability but these times are subject to change at two weeks notice.

From Basingstoke: The current timetable offers a service from Basingstoke to Tadley (The Jaz2) with the first bus departing from Basingstoke at 5.46am and arriving in Tadley at 6.33am. Approximately two buses an hour run after that. The journey times vary according to the route taken but are approximately 50 minutes.

From Newbury: please contact Traveline or the Travel Office at Newbury Bus Station on 01635 567500 for accurate information in October. The earliest bus to Tadley or Aldermaston is currently the 105 which departs from Newbury at

6.52am, arrives in Tadley at 7.40am and in Aldermaston at 7.52am.

Currently the 148 bus from Reading Station departs at 6.20am and arrives in Tadley at 6.55am. Buses follow fairly regularly throughout the day.

By Bicycle: Cycling conditions are tolerable unless there are high winds and rain. The few hills are fairly steep but not high. If you are not so young and hardy you may want to put your bike on a train (see below) and cycle the last few miles to Aldermaston. AWE is anxious to show how much they care for the planet while they prepare the means to destroy it.

By train: The nearest train stations to AWE are Aldermaston and Mortimer (latter more frequently served), but unless you want a long walk from the station (or can get a lift/arrange transport), buses from Basingstoke or Reading stations will be more convenient. Times and live 'departure boards' can be found on www.nationalrail.co.uk. Tickets can be bought from your local station or a site like www.chester-le-track.co.uk.

With a bit of planning it is possible to arrive at Aldermaston village by train then switch to the Newbury 104 bus which will take you to Church Street, Aldermaston - very convenient for people wanting to demonstrate near the Boilerhouse Gate of AWE. People coming to AWE have in the past used Midgham Station. It's an hour's walk from AWE unless you organise a lift from the station. Below is a link to interactive rail routes in the area
<http://www.firstgreatwestern.co.uk/RouteMapInteractive.aspx>

If coming from a distance, get tickets well in advance, and look for cheaper single tickets. Your local station will tell you whether cheap tickets are yet available (for East Coast main line, www.gner.co.uk will also tell you). If coming from Scotland (or northern England via Carlisle/Edinburgh), you may be able to get Bargain Berths on the overnight trains to London (Caledonian Sleeper), which are sometimes very cheap, and only available online, at www.firstscotrail.com

For further transport assistance contact Kate on 0774 8015601 or email ktholcombe@aol.com

Parking at AWE

There is hardly anywhere in the village of Aldermaston to park, and it is then at least a mile's walk to Construction Gate and several miles walk to Boiler House Gate. People should try to park in Tadley. Blockaders should probably get dropped off by a driver who will then need to get themselves away from the site, at least temporarily, so that they don't get picked up by the police. Having a bike with you can be useful to get from car to site or around the site.

In the absence of directional signs to designated blockade parking, and in the absence of any available parking on the roads immediately around the establishment due to police parking restrictions, people may have to park somewhere in and around Aldermaston or Tadley and walk, but we have a minibus available to assist anyone who isn't able to walk distances. Many of the roads round and about are subject to double yellow line parking restrictions.

What to bring to the blockade

The police may not attempt to clear the road immediately so please come prepared for the whole day

- Warm and waterproof clothes
- Something to sit on (a cushion in a sealed plastic bag or an old carry-mat)
- Food for you and to share
- Thermos flask with a hot drink or soup
- Any medication you are taking in a clearly labelled bottle or box
- Musical instruments
- Banners
- A bust card with legal support phone numbers is available on the website, in theispack and from support teams at the gates
- The spirit of hope and resistance

What NOT to bring to the blockade

- Alcohol or illegal drugs
- Anything that might be mistaken as an offensive weapon, for example penknives
- Anything you don't want the police to see such as address books, mobile phone contacts, etc.
- A negative attitude

After The Blockade Finishes

If you have not been arrested: We will get you back to the joint meeting venue in Reading to get some good food and meet everyone else, to join in the de-briefs and to await those coming back from police stations. You are welcome to find a place to sleep at the Reading venue or at some other places we have booked and to travel back in your own transport when it suits you and your group. We have rooms booked until 10a.m. the next morning. Make sure you know when your transport is due to leave and where it will be leaving from. Please remember to collect all your baggage and to always have it labelled.

If you have been arrested: When you are released there will be people outside the police station to collect you and to take you to the Reading venue (to be confirmed later) where you should let the Legal Support Team know you have been released and what you were charged with. Be careful not to book a return journey early if you intend to get arrested, or if you intend to wait for someone else who will be arrested. We hope you will join in the de-briefs and enjoy the food and company. There are places to sleep if you wish.

Donations Request

Organising blockades takes a great deal of voluntary work but it also costs money so if you can send us a donation, however small, we would be very grateful. Cheques should be made out to 'Trident Ploughshares' and sent to Trident Ploughshares, 15 Zion House, Jubilee St, London E1 3EN. Thank you

Information about people who have been arrested: The Legal Support Team will do their best to get information about your friends and members of your affinity group who have been arrested posted up at the Reading venue as soon as they can on the Monday evening. Please do not ring the Legal Support number to ask for information as this will jam the Legal Support phone lines. If you wish to find out about people who have been arrested phone the **Action Line: 0845 4588 361** after 7pm when we should know what is happening with most people.

Media: The media team will send out press releases and liaise with journalists on the day. If you want to contact your local press or particular papers or stations please do this if you can. We plan to have our own video and photographic cover to feed into the media, to contribute to our own archives and to encourage best behaviour from police.

TP Legal Briefing

The TP legal support team will be present throughout the blockade. We will:

- Record all arrests where possible
- Keep in touch with the police station during your detention.
- Find you a lawyer if you need one.
- Collect you from the police station on release.
- Provide further information about the court process.

Our telephone numbers are on the bust-card; please keep it with you, or write the number on your arm. Ask the police to ring this number if you are arrested. The bust card will also list your detention rights.

Nonviolent direct action ALWAYS carries the risk of arrest

Even if you have been arrested before, please read this leaflet. If you need more information, (for example about the process at a police station), please ask the Legal Support Team.

What could I be arrested for?

- **Military Lands Bye-laws**

The bye-laws prohibit a number of activities on Ministry of Defence land including “obstructing a lawful user or any other person acting in the proper exercise of his duty”; causing “any nuisance, [or behaving in an indecent or obscene manner]”. These may be used to arrest blockaders, Charges against all persons arrested under the bye-laws for blockading to date have been dropped. It is unlikely, but not impossible, that you may be arrested under the byelaws if you are blockading on MoD land, but most of the gateways have since late 2009 been re-designated as part of the public highway.

- **Obstruction of the Highway**

If you stand, sit or lock-on in a public road (including in a gateway) you may be arrested for obstruction of the highway. The police may first warn you that they will arrest you unless you move. They might remove you without arresting you. If you do not move or you are moved and return or are locked on you will probably be arrested. This is a minor (non recordable) offence; fine of about £50- £250, plus court costs (between £30 and £250). Obstruction is also an offence under the byelaws.

- **Obstruction of a Police Officer in the course of his/her duty**

This is more serious than obstruction of the highway. In law this charge should accompany a charge for another offence - such as obstruction of the highway - but the police will sometimes make an arrest just for this offence.

- **Section 14, Public Order Act, 1986**

Previous TP blockades have been prevented when police decide they are an assembly which would be “likely to result in serious public disorder [they mean traffic jams], serious damage to property or serious disruption to the life of the community”. They will either try to give you a notice or order you to a designated protest area (in the main gate car park). It is an offence not to obey a S.14 order (for example, by refusing to go to the designated area or by leaving a designated area). Conviction can carry a fine of up to £1000; organizers of an “unlawful assembly” may also be arrested and face higher penalties.

- **Section 12, Public Order Act, 1986**

S.12 places similar limitations on processions as S.14 does on assemblies. The police should produce an order specifying the restrictions, stating where you may “process” or march. Similar penalties as above.

- **Serious Organised Crime and Police Act 2005, Section 128 (SOCPA)**

It is a criminal offence to enter “protected” areas inside AWE Aldermaston, under s.128 of SOCPA as amended by s.12 Terrorism Act 2006, and applicable to Nuclear Licensed Sites

(NLS). "Protected areas" are defined as land within the boundary of the NLS, that is INSIDE the INNER weld-mesh fence (except at the North Ponds). This does not include the perimeter fence, "sterile area", recreation society, football fields etc. This definition follows the dismissal of a prosecution in August 2008 of an AWPC woman arrested at Aldermaston in March 2007. Maximum penalty: 51 weeks' imprisonment and or a £5,000 fine; women at Menwith received a (£50 fine); at Faslane defendants were admonished.

Other less likely possibilities include:

- **Breach of the Peace**

Although violence or threat of violence must be offered, in practice BoP is used to prevent peaceful demonstrations. You can be bound over to keep the peace. BoP is not a criminal offence, but if you refuse, you may be detained until you agree to keep the peace.

- **Aggravated Trespass, Section 68, 1994 Criminal Justice & Public Order Act**

If a blockade takes place on MOD land (for example, a gateway): you may be arrested for "trespass[ing] on land with the intent to disrupt or obstruct or intimidate someone going about a lawful activity on that land (or adjoining land)". Under Section 69, you can merely be warned to leave the land if the senior police officer present "reasonably believes" that a S68 offence has/is/will be committed.

- **Section 5, Crime and Public Order Act, 1986**

This requires you to cause "distress alarm and harassment" to a reasonable person (usually a police officer) by using threatening or abusive behaviour or language (including banners, placards or T-shirts) or disorderly conduct.

- **Criminal Damage**

If you cut the fence, paint or chalk on the road, use red coloured water to symbolize blood, graffiti on MoD property, and in some circumstances, climb the fence, you can be arrested for criminal damage. Damage valued at under £5,000 will be tried in a magistrates court; if damage is over £5,000, or if you are arrested for going equipped to cause criminal damage, you may elect for trial by jury in the Crown Court. Penalties are normally a fine, which reflects the value of the damage, compensation for the damage, plus court costs.

- **Stop and search**

The Ministry of Defence police may stop you and ask your name, address, what you are doing etc. You do not have to give them any information, or give your name or any details, even though they will ask. Always ask what power they are using and ask them for a "Stop and Account" form, (stating why they stopped you).

If the police have "reasonable suspicion" that you (or your vehicle) have drugs, weapons, stolen property or tools to commit burglary or criminal damage they can search you. It is possible that orders under **s.60 Criminal Justice & Public Order Act** or will be in place, which allows searches for weapons or items which may be used for criminal damage where an inspector or above reasonably believes incidents involving violence may take place. **s.44 Terrorism Act** gives police powers "only for the purpose of searching for articles of a kind which could be used in connection with terrorism". You have the right to a written record of any search.

You do not have to provide your name, address or any other details, except if you are the driver of a vehicle which is being searched, in which case you do have to give them your details and driving documents. You can also be arrested for not giving your name under **s.25 PACE**, which covers non-arrestable offences (for which they would issue a summons)

Being Arrested

After arrest you will be taken to a police station in Newbury, Reading or elsewhere in the Thames Valley region. Don't worry, stay calm, stay non-violent. Detention is long and boring; take a book.

You will first be taken before the custody sergeant. You have to give a verifiable name and address. You do not have to give your date of birth, although refusal can lengthen detention.

They will tell you your basic detention rights, including:

- To have someone informed of your arrest. Please ring – or ask the police to ring – the legal support number.

- To see a doctor, if you are ill or injured.
- To see a copy of the police Codes of Practice (PACE) – which sets out your rights.
- If you are not a UK national, you can ask for an interpreter.
- If you are 17 or under, you cannot be interviewed without a parent or legal guardian present.

You will be searched, your property taken away and you will be placed in a cell for at least six hours or longer, depending on the number of arrests. You have the right to hot drinks and meals at appropriate times.

Right to a solicitor: the law has changed. For non-imprisonable offences (including obstruction of the highway) you no longer have the right to free legal advice from your own solicitor, but can speak on the phone to a “legal adviser” provided by ‘Criminal Defence Services Direct.’ If you have been arrested for a serious offence, or if the police want to interview you, then you have a right to speak to a solicitor of your choice free of charge, or the duty solicitor. We advise you to contact the solicitor on the bust card

interviews

The police may sometimes record a taped interview to gather further evidence. You have the right to silence, and do not have to answer any questions, often the easiest and safest thing to do is say “no comment”. If you choose not to speak, the police will tell you this may be viewed negatively. You can prepare a statement in advance, which you can read out; if you want it to be included in the evidence presented in court. If you make a statement, please talk only about yourself and your own actions – and not those of other people. After making your statement you can continue to say “no comment”. If in any doubt, say nothing!

You have the right to consult a solicitor if interviewed (see above).

'Fishing' interviews

You may be invited to an intelligence interview with the MoD CID which they use to “fish” for information about you, other people at the blockade, organisers etc. You do not have to be interviewed; if you do please speak only about your own actions, not about other people.

Before release

The police will take your fingerprints, DNA and photograph. They have the power to use “reasonable force” if you refuse. They will return your property.

Cautions, Bail & Police Bail

If this is your first arrest, you may be offered a caution and released without charge. A caution means that you will not go to court or receive a penalty but it is an admission of the offence and it will go on your record. You do not have to accept a caution. If you are charged with an offence, you will almost certainly be released on bail. Bail conditions might, for example, prohibit you from going back to Aldermaston. Ask for a map of the area you may not enter. If you do not want to accept bail conditions, ask for a solicitor. It is often difficult to challenge bail conditions at the police station, but people have been held overnight and successfully challenged them in court. If you are NOT charged you may be bailed to report to the police station (police bail) up to 12 weeks later while the evidence against you is considered by the Crown Prosecution Service who decide if you will be charged. There should be no conditions attached. Relatively few people have been charged after answering police bail. The legal support team will ensure that someone will collect you from the police station. Please tell the driver your name, whether you have been charged, and if so, with what offence, and the date you are required to attend court.

Going to court

Ring **08454 558 361** for post-arrest support.

Most people charged with obstruction of the highway at Aldermaston have been convicted. You are very likely to be convicted unless the police drop the charges. You are unlikely to be acquitted of “obstruction of the highway” with a defence based on international law. If you plead guilty at the first hearing (usually a week after arrest) magistrates impose a lower fine and costs than if you plead not guilty. If you plead not guilty you will have to attend court to enter your plea and a date will be set (within a few months) for trial.

Don't worry, you will not be alone

Legal Observers Briefing

Your role basically involves: making sure everyone at the action has a **Bust Card**, recording details of those arrested, passing this on to the **Offsite Legal Support Team** and generally noting any information which might be useful in court.

Your group should have a least two people available to act as Legal Observers, so that we have at least two observers at each gate at all times. You can share the task, but even if you are “off duty”, do not help out with other support roles. When the police move in to make arrests you have to be there on the spot prioritizing legal observing. Even before anyone is arrested, you need to watch and record what is happening, and keep watching until everyone has been arrested or has left the gate.

Your main responsibility is to record all arrests at your gate; this includes arrests of people you don't know or who are not in your group. If arrests start, try to position yourself where you can get a good view of what is going on.

The most crucial thing is getting the names of people being arrested.

Try to know the names of everyone in your group. If you know people by nick-names check that you know the name that they will be giving to the police. If you don't know the person's name, ask them, “What name are you giving?”, and if you cannot get their name, write a description of the person. Also note down: the time they were arrested; the number of the arresting officer/s.

If the police use **excessive or unreasonable force** or pressure points, take the number/s of the police officer/s responsible. An injured person may want to make a complaint against the police, and your record will be important. Note the times of anything significant. Ask people around you to tell you what they saw, and take their name and mobile number, and whether they took any photos or videos, as they may need to be contacted later.

From the beginning of the action it is useful to have a general record of the atmosphere, of how the police respond, how many are there, when specialist cutting teams arrive, at what stage police cordons are established etc. you can also note:

? (Before arrests) Is a warning given? Who by? At what time? What do they say? (If you hear the words. “Section 12 “ and “Designated protest area” or “Breach of the Peace” ring the Onsite Legal Support Team).

? Are people being cut out of lock-ons? Who by? How long does it take? Are the police being careful? (Generally they are, but even then people could possibly be hurt and if so you should note this.)

? Is there traffic actually present which is being stopped? Is it workers' traffic or is local traffic also held up? Can through traffic get past? This information may be helpful if someone wants to challenge the police's account in court.

Ask which **police station** people are being taken to. The most likely are Newbury and Loddon Valley (east Reading). If lots of people are arrested they may use: Reading (central), Slough and Abingdon.

Legal Observers are not **Police Liaison**. Other people will do this. Your job is to record what happens, not represent your group. If, however, you need to liaise on your own behalf (e.g. about staying near enough to see arrests if there is a police cordon) then ask to speak to the senior officer present. If there are problems with the police (e.g. not wearing numbers, excessive force), tell your Gate Support people who will inform the **Police Liaison**).

Although **Thames Valley Police** are familiar with the role of Legal Observers, you have no status in law. You can be arrested (e.g. for obstructing a police officer). If they want to cordon off an area they generally tell Legal Observers to get out of the way. Your role is not to be arrested, so move out of the way, and try to find somewhere else from where you can watch for arrests.

What to do if the police try to cordon off the blockaders and warn anyone not wanting to be arrested to leave the area. Try to stand as near as you can without risking arrest yourself. Shout out to the people inside the cordon that you are there and tell them how much you can see. They need to know that they need to keep you informed if you can't see what is going on.

If people are being cut out of lock-ons the MOD police cutting team usually establish a ‘sterile area’ around where they are working. This might just be a cordon of police officers but they often erect plastic screens if they are using cutting tools (partially for health and safety). This takes a great deal of time and faffing about so makes the blockade last longer. Sometimes Legal Observers can see underneath,

around or over the fencing, or over it if you are tall, but you might need a running commentary from inside.

If the police keep people a long way back from the blockaders then see if you can stand near to the vans where people will be taken. How close you can get depends on the officers in charge but you should at least be able to see who is being taken away.

It is up to you at what point you **phone in the names** of those arrested to the Onsite Legal Support Team. They don't need them instantly; it is better to stay and keep an eye on the arrests. When you get a chance tell the Onsite Legal Support Team the gate, the names of people arrested, and the times they were arrested. It is also useful to know who, and how many people have been put into the same van, and where the van is going (if you can find out). Tell the Onsite Legal Support Team if anyone is injured.

Legal Observers need to stay at the gates until everyone leaves. Let the ONSITE LEGAL SUPPORT TEAM know when your group has stopped blockading. Keep your notes safe and dry as details may become important later.

If you need to stop Legal Observing then phone in to the ONSITE LEGAL SUPPORT, and tell them. WAIT until another observer turns up and make sure you fully brief them. Please don't just throw your tabard at someone and jump into a lock-on! The police will definitely stop Legal Observers being near to arrests if they think they are going to join in the action.

When everyone has left your gate, ring the ONSITE Legal Support Team, who will tell you where to meet (probably Mackie's café) for a **debriefing**. This is important and you must attend if at all possible.

Check-list of things to have with you

- ? You need to wear a **high visibility fluorescent vest** (it will be dark when the blockade starts, so this is also for your own safety). Write the words "LEGAL OBSERVER" in thick felt tip pen so that it is clearly visible on the back (and on the front if you wish). This helps both blockaders and police to identify you
- ? Spare Bust cards
- ? Spare Legal Briefings
- ? Spare Legal Registration Forms
- ? Mobile phone with fully charged battery and credit (and if possible spare battery). **This number must be sent to the ONSITE Legal Support Team, along with your name, name of your group and gate before 7 February**
- ? Felt tip pen, to write Legal support number on your arm, and to lend to blockaders to do the same
- ? Contact list of ONSITE LEGAL SUPPORT TEAM and other support people
- ? Notebook or clipboard and spare pens and pencils (use pencil if it rains, it doesn't run)
- ? Headtorch if you have one as this makes writing in the dark at the start of the blockade easier
- ? Rucksack with food and drink, and spare clothing if raining

You do not need a camera. It can get in the way, and hopefully others will be taking photos (including the police)

THE LEGAL SUPPORT SYSTEM

This is slightly different to the Faslane system, but the basic model is the same, as is the aim: to ensure that we know where everyone who is arrested is being held, so that we can pick them up after release; and if they are not released, to find out why and if necessary get them a lawyer.

- Everyone coming to the action has a **Bust Card** (which will be downloadable from the website a month before the blockade) with phone numbers for Legal Support Teams, both ONSITE and OFFSITE and solicitor and a **Legal Briefing**
- Everyone has filled in a **Legal Support Registration Form** that is already on the website in downloadable form and will either have sent them in to the address on top of the form beforehand or will hand them into the gate support who will get them to the OFFSITE Legal Support Team
- At least two people are present at any one time at each gate acting as **Legal Observers**

- Legal Observers report arrests to the **Onsite Legal Support Team** who will keep track of people through the police system. People who have been arrested ask the police to inform the Onsite Legal Support Team where they are being held
- The **Onsite Legal Support Team** reports arrests and where people are being held to the **Offsite Legal Support Team**
- The **Offsite Legal Support Team** handle the legal registration forms and keep in touch with the Onsite Legal Support Team
- The Onsite Legal Support Team find out when the police are going to release people and informs the Offsite Legal Support Team who work with the **Transport Support** who co-ordinate lifts to pick them up
- The Offsite Legal Support Team phone should be used if people have questions about their friends who have been arrested and whether they have been released
- If people are held overnight to appear in court the Onsite Legal Support Team check in with the solicitor and arrange **Court Support**

Legal Registration Form

Please give the completed Registration Form to the Gate Support Team when you arrive at the blockade or better still post to TP, 15 Zion House, Jubilee St, London E1 3EN or email to blockawe@yahoo.co.uk to arrive before 1st February.

For office use only Hands off!	Arrest
	Police Sta.
	Release

ALDERMASTON Big Blockade 15th Feb 2010 Legal Registration
 You should fill in one of these whether you are planning to risk arrest or not.
Please write clearly.

Family Name	please tick MALE
First Names	FEMALE
Address	
POSTCODE (important)	
Tel:	Mobile:
E-mail:	
Name of Affinity Group:	
Will you be risking arrest?	
Emergency contact:	
Do you want this person contacted if you are arrested?	
Do you want this person contacted if you are held overnight for court ?	
Do you have any legal complications e.g. warrants, bail etc?	
Do you have any health issues/medication you want us to know about?	

USE OF PERSONAL INFO – PLEASE READ AND SIGN! We cannot help you properly unless you answer these questions and sign the form.	
Can TP use this info for your future legal and court support (and share it with the legal support team or other activists in court)?	YES / NO
Can TP, AWPC & CND add your contact details to our database for occasional mailings?	YES / NO
Can TP, AWPC & CND contact you when mobilising (or looking for court support etc) in your area?	YES / NO
Signed: _____ (The address above should be the one you will give to the police. If you want post sent to a different address please put that on the back of this sheet)	

This blockade is organised by Trident Ploughshares, Aldermaston Women's Peace Camp and the Campaign for Nuclear Disarmament. The ongoing legal/court support will be co-ordinated by Trident Ploughshares.

Bust Card – take a copy with you to the blockade!

If you are arrested

you have the right to have someone informed of your arrest.

Ask the police to ring the **LEGAL SUPPORT** number: **07887 802879**.

LEGAL ADVICE: You have the right to a lawyer **ONLY** if you have been arrested for a serious offence or you are interviewed by the police. Please call Bindman's (see front of card). In other cases, you are only allowed to speak on the phone to "Criminal Defence Services Direct".

You have the right to see a doctor, if you are ill or injured.

You have the right to see the PACE Codes of Practice (sets out your rights).

You have the right to silence.

If you do not have a UK passport, you may contact your country's embassy or consulate for help. You may ask for an interpreter.

You have to give the police a verifiable name and address.

You do not have to give your date of birth.

The police have the right to take your finger prints, DNA and photograph.

ON SITE LEGAL SUPPORT

If you are arrested, ring - or ask the police to ring - the number on the front of this card: 07887 802879

LAWYER: if you need legal advice after arrest (see inside for details), call Bindmans: 0207 833 4433

OFF SITE LEGAL SUPPORT

If you want to find out about someone who has been arrested, ring this number 0845 4588 361

GOING TO COURT?

For support going to court, contact blockawe@yahoo.co.uk or ring 0845 4588 361 after 16 February

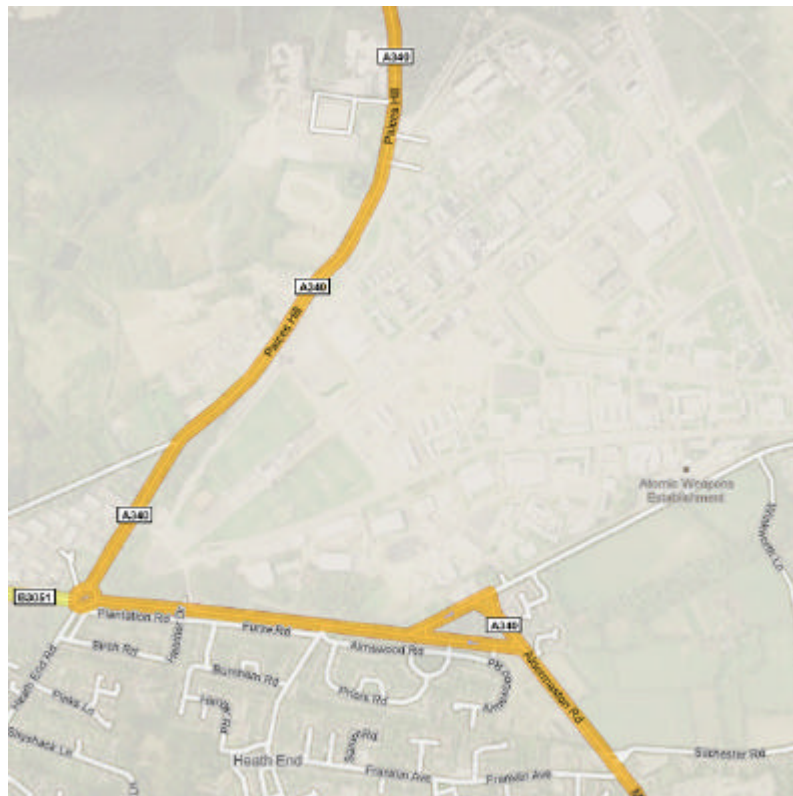


Legal Support
07887 802879

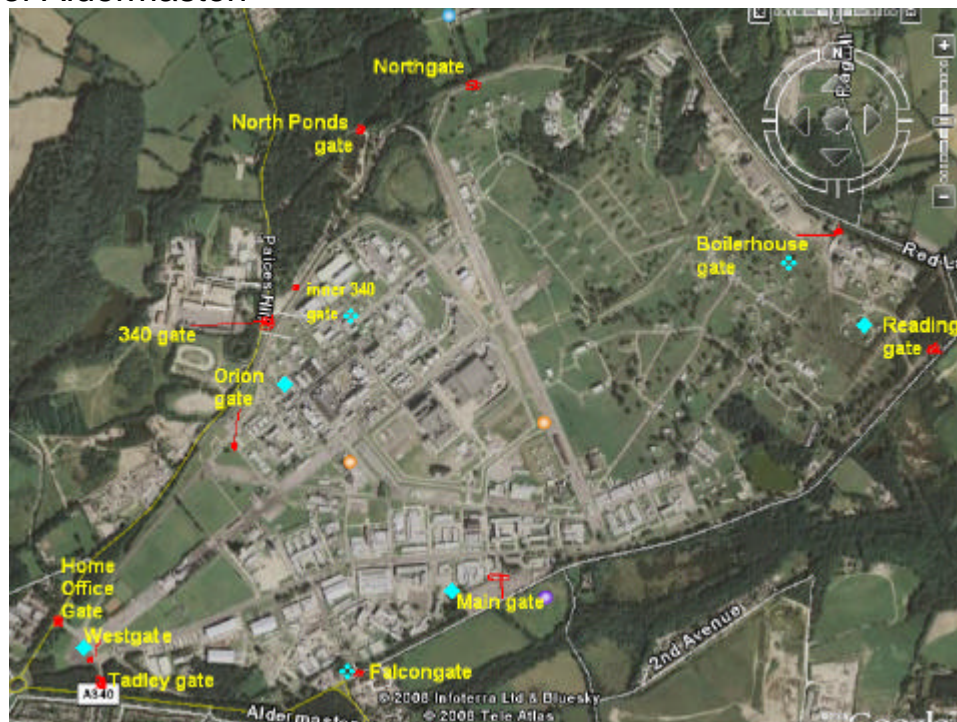
Aldermaston
15 February 2010
BIG BLOCKADE

Please read now and keep

Arial Map of Aldermaston



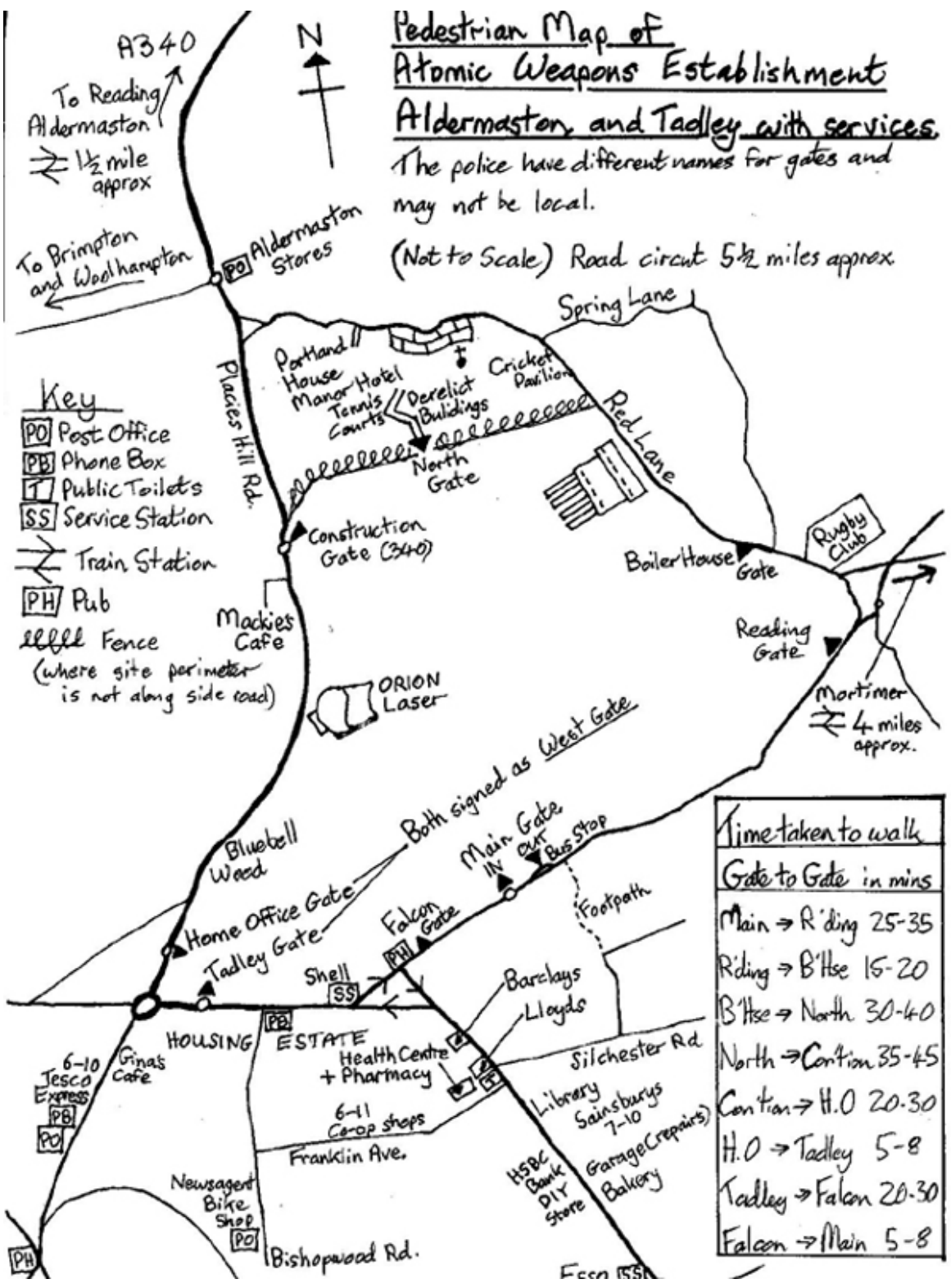
Arial Map of Aldermaston



Pedestrian Map of Atomic Weapons Establishment Aldermaston and Tadley with services

The police have different names for gates and may not be local.

(Not to Scale) Road circuit 5 1/2 miles approx



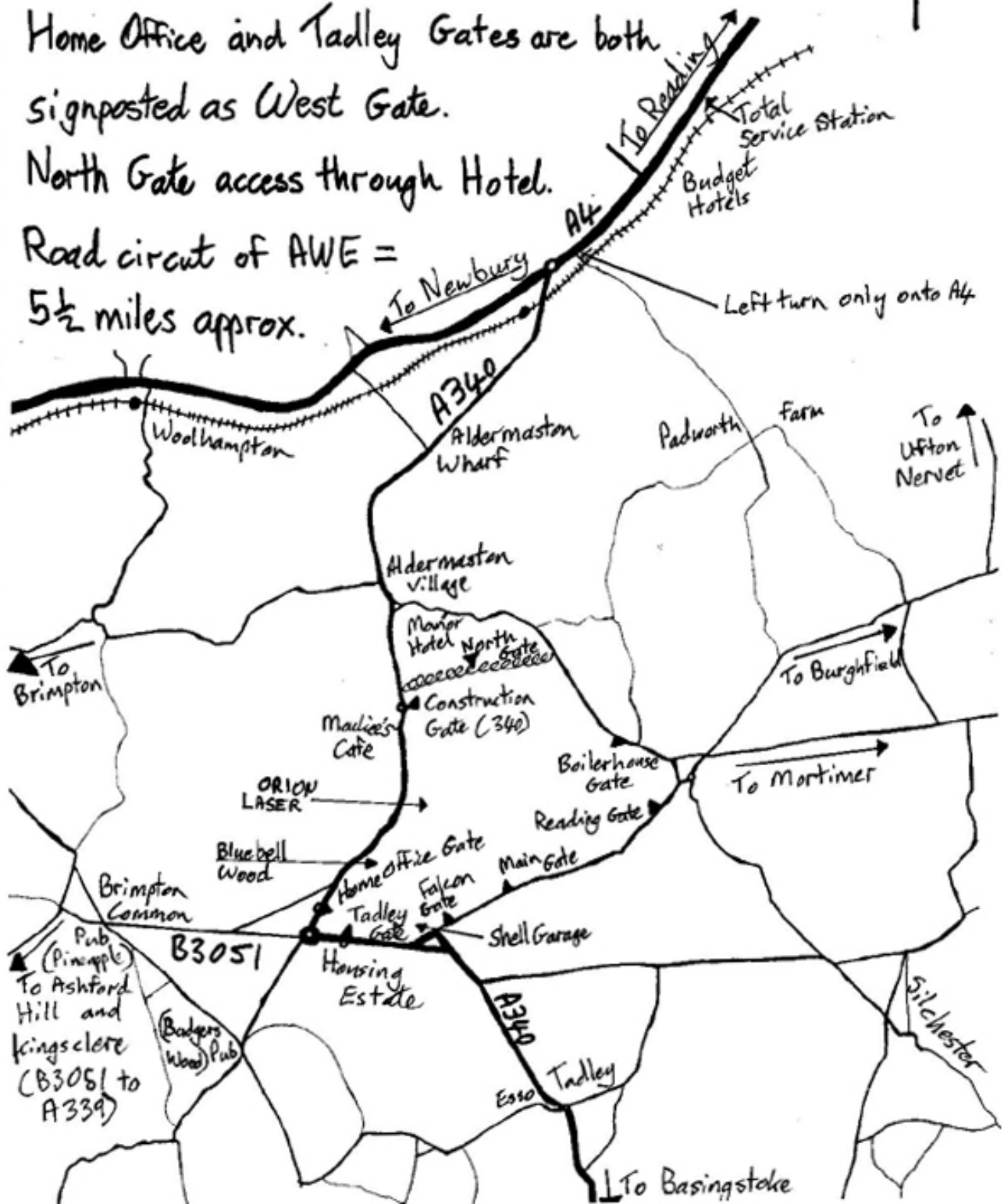
Driver's 1' lap of Alternative Routes to the gates of AWE, with Landmarks.



Home Office and Tadley Gates are both signposted as West Gate.

North Gate access through Hotel.

Road circuit of AWE =
5½ miles approx.



Map of motorways

